

NISENAN INDIANS



For thousands of years, all of the greater Folsom area could have been considered a park and open space.

This active park was utilized for hunting, fishing, gathering, festivals, and Native American games.

Folsom's Nisenan Indians were river-oriented in their lifeways.

Food included acorns, seeds, tule roots, berries and fruits, salmon, sturgeon, trout, elk, deer and antelope.

Hymak'aaa grinding stones (flat topped boulders) were used to grind acorns into meals.

Grind stones exist today at Hinkle Creek Nature Area, Nisenan Community Park, and our local Powerhouse Park adjacent to the Amerian River.



Indian games (sports); although some Native Americans culture may have been lost, several of our modern sports evolved from Native American games. A few are:

- Buckskin balls, triangular openings on top of a sticks ten feet above ground - forerunner of basketball.
- Po'sko - archaic form of football.
- Stick-ball (Lacrosse) - one of Folsom's newest sports.



Hinkle Creek Nature Area • Opened 1981

Nisenan Community Park is a 54 acre park. Folsom honors our Native American history by maintaining 48 acres in the natural oak grassland state.

Hinkle Creek is a 36 acre lot of pure nature. It consists of a stunning trail that coils around gorgeous trees, petite pastures, and the Hinkle Creek.



Nisenan Community Park • Opened 2011

1851

AMOS P. CATLIN

NATOMA COMPANY

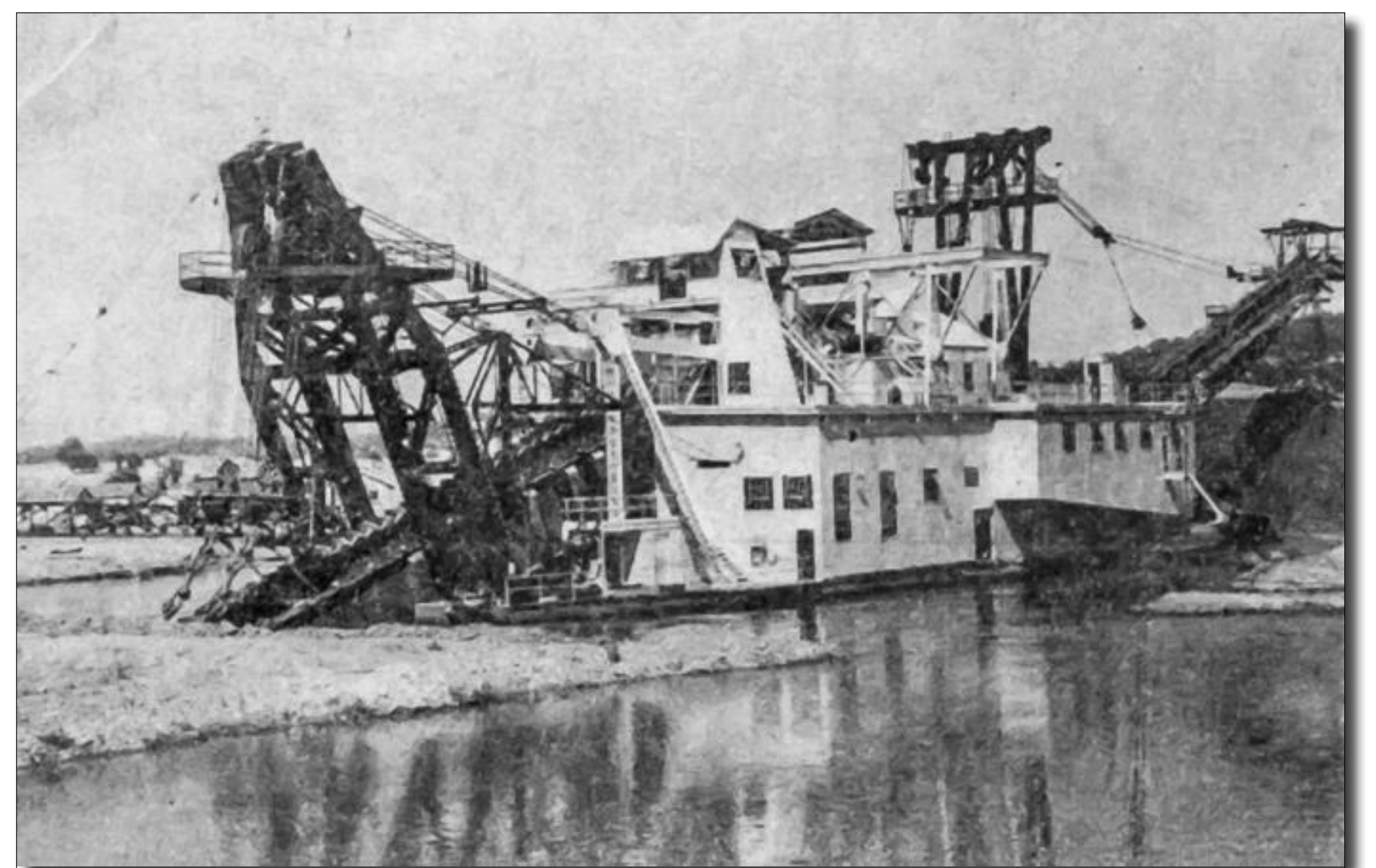


Amos Catlin was the *Founder of the Natoma Water and Mining Company*. Natoma is a Maidu Indian word meaning “clear water” forever tying us to our Native Indians roots and the clear water of the American River.

Purveying this clear water and utilizing it for mining allowed the Natoma Water and Mining Company to become one of Folsom’s first successful international businesses.

The mining company with the success of their global enterprise allowed them to provide the City and the region with multiple parks and open space over the company’s 150 years of operation.

Amos Catlin set the tone for community involvement that remains alive and well today. He was a Trustee of Folsom’s first College, the Folsom Institute and went on to become a Judge, State Assemblyman, and Senator where he helped bring the capital to Sacramento.



Folsom last Gold Dredger



Amos P. Catlin Park • Opened 1998

Folsom honored Catlin with his own park in 1998 for his impact to Folsom and the greater Sacramento area. The open space land adjacent to his name sake park depicts dredger tailings from the mining operations as does the pedestal of his park sign.

1890

NATOMA GROVE

The City's first park was not a city park, but a company park, owned, developed, and maintained by the Natoma Water and Mining Company for over 40 years.

The park was located on Sibley Street, a short distance south of Bidwell Street.

The park was used by the Natomas Company, the Odd Fellows Lodge, Veteran organizations, Folsom Improvement Club (formally known as Maid of Honor Committee), and the Portuguese Community, to name a few.

Remnants of the park still remain and are owned by the family of R.G. Smith, past President of the Natomas Company.



A part of the Natomas Company operations



Natomas employees on the truck was taken at a break from building the baseball field. (Do you know where this baseball field was built?)



Natoma Grove • May Pole Dance

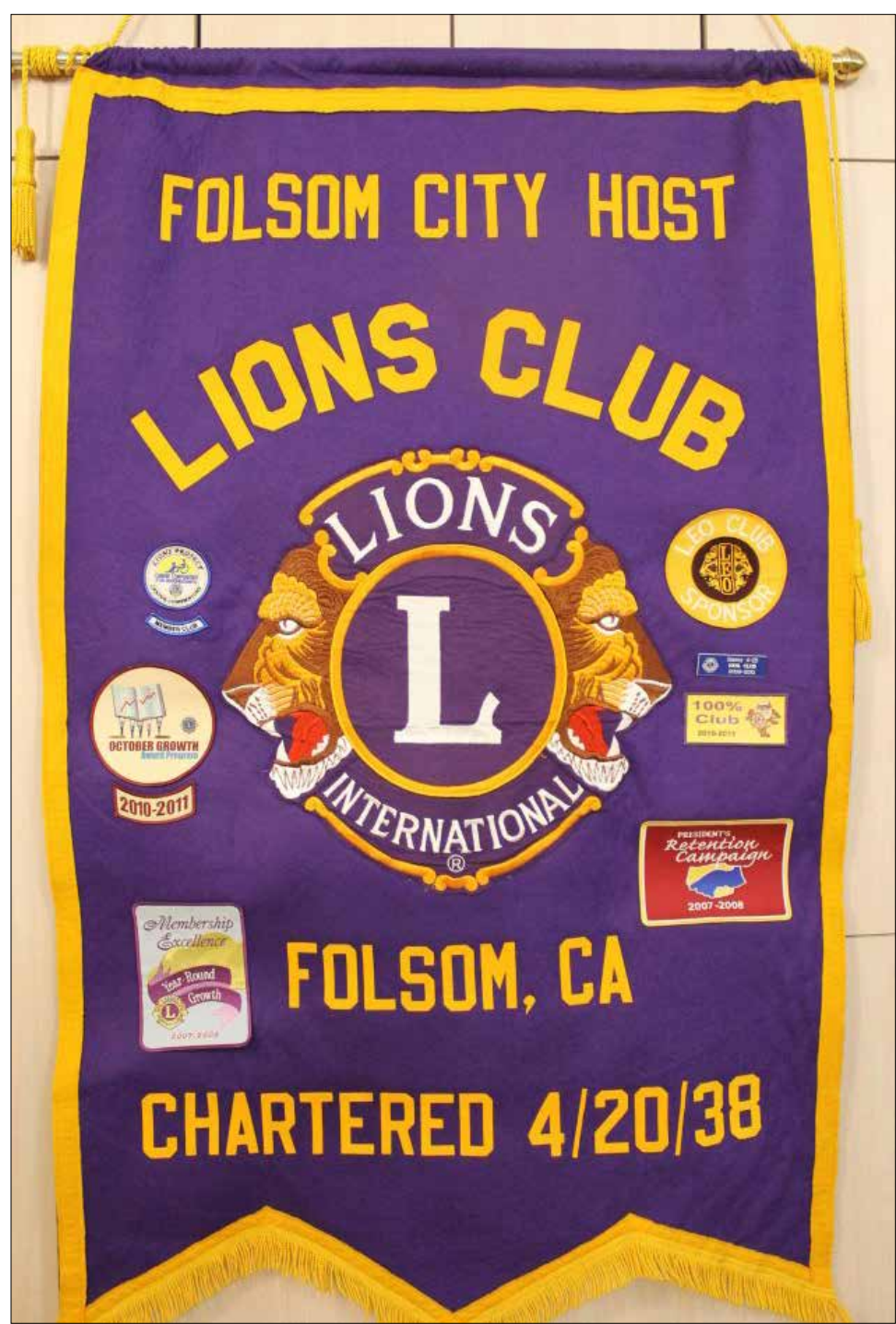


Natoma Grove • Group Games

1938

LIONS CLUB

CITY LIONS PARK/ZOO



1938: Folsom City Host Lions Club was chartered.

1947: City acquired 28 acres of land from Folsom Prison through the efforts of the Folsom Lions Club to build City Park, now known as Folsom City Lions Park.

1948: The Folsom Lion's Club built an amphitheater supervised by R.G. Smith, President of the Natomas Company and outstanding engineer.

Folsom City Lions Park was the first City owned community park built in Folsom.

2002: Folsom Lake Lions Club (once the Lioness Club of Women) became a full-fledged lions club.

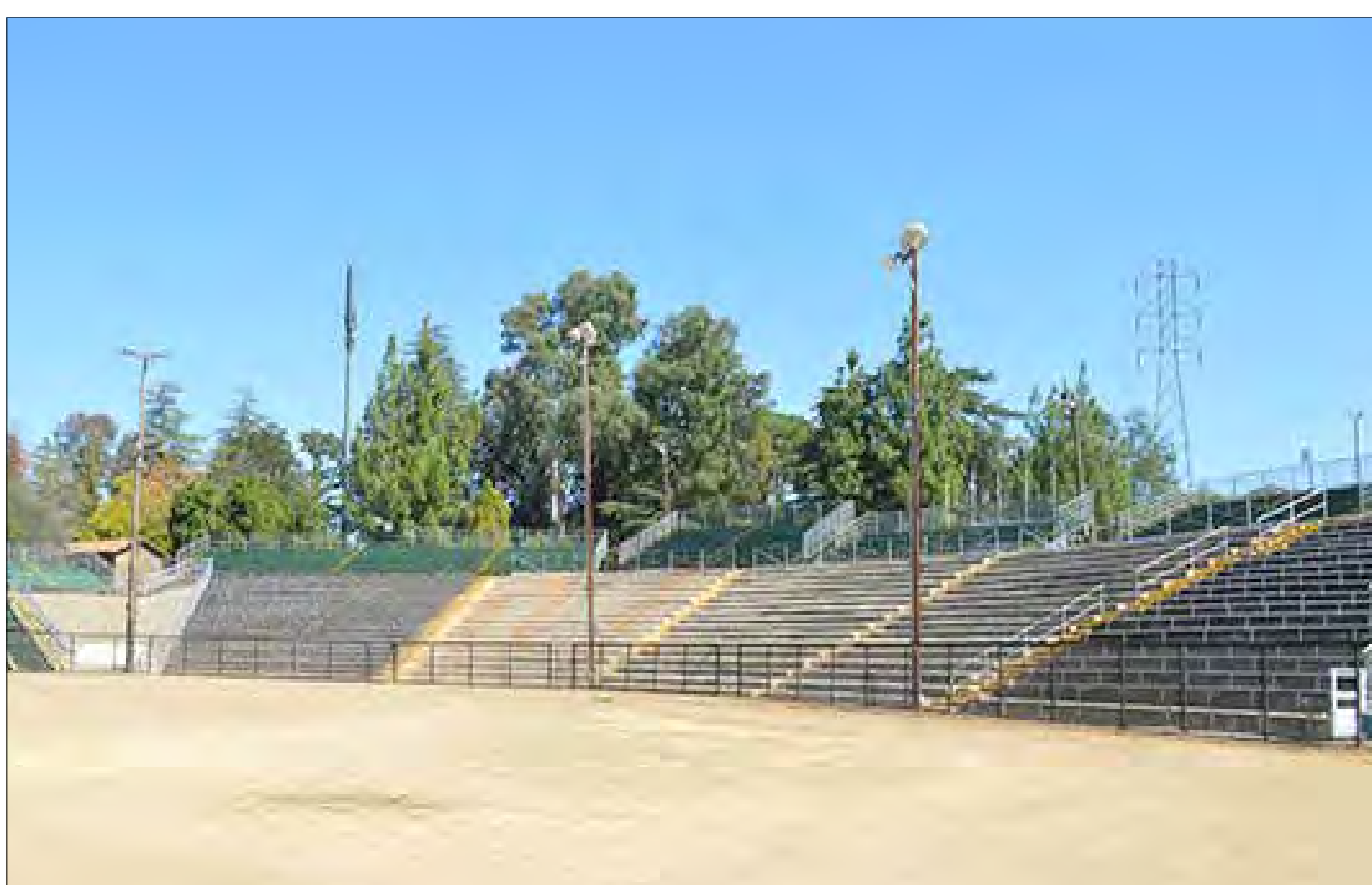
Two additional major projects the Lions Club built:

- Folsom's original Community Clubhouse
- R.G. Smith Clubhouse

These facilities were made possible from proceeds of the Pioneer Festival precursor to what is now known as the 4th of July Rodeo.



Nick Econome
Past President of the Lions Club
Pharmacist and small business owner of "Model Rexall Drug Store" (with his brother George)



Dan Russell Arena opened in 1960 with 6,000 seats. The original amphitheater's 1,392 seats are a part of the 6,000 seats.



Folsom City Lions Park • Opened 1963

1953

ROTARY CLUB

LEW HOWARD PARK



1953: Rotary Club of Folsom was chartered.

1964: Twenty-seven acres were acquired from the County for Lew Howard Memorial Park; this was one of many Folsom Rotary Club civic projects.

1968: Lew Howard Memorial Park was the second City owned community park built in Folsom.



George Econome
Served as President of the Rotary Club,
also an active member of the Folsom
Chamber of Commerce
Pharmacist and small business owner
of "Model Rexall Drug Store"
(with his brother Nick)

Lew Howard was known as "Mr. Rotary" as he was the "consummate Rotarian." Lew had the respect of his neighbors for his effort to obtain Lew Howard Park from the County of Sacramento, and for his many other contributions to the Folsom community.

The park is enveloped by the Hinkle Creek Nature Trail.



Lew Howard Memorial Park • Opened 1965

1978

CHAMBER OF COMMERCE FOLSOM ATHLETIC ASSOC LEMBI PARK

Community members realized the economic and social values of creating a parks and recreation system & were determined to institute one for Folsom.



1946: Chamber of Commerce - partnership of businesses and professionals in Folsom

1977: Richard Cantor, President of the Folsom Chamber of Commerce, created a sports committee of the chamber chaired by Phil Moeszinger

Roger Zittel, Chamber's Manager, provided the encouragement and resources towards forming the Folsom Athletic Association (FAA)

1978: Folsom Athletic Associations first official meeting

1979: First City Recreation Department was created by the FAA

FAA conceptualized, fund raised for, and constructed the thirty acre Lembi Community Park

30 acres of land was donated by the Natomas Real Estate Company



Lembi Park • Home of the FAA • Opened 1982

Association Underway

By LEO PIERINI

The first official meeting of the newly formed Folsom Athletic Association was held last Monday evening, Nov. 29 at the Southern Pacific Depot.

Discussed at the meeting were the basic goals of the new organization, just following the selection of its official name.

In short, the association hopes to accomplish capital improvements for Folsom athletic facilities in the form of two steps.

First, the analysis of present facilities listing needs. And secondly, to raise funds to meet those needs.

As secondary goals, the association wishes to create a unified voice on behalf of Folsom recreational athletics—whether that voice be at City Council meetings or whatever was not disclosed—and to aide underprivileged recreational athletics with equipment and, or, scholarship assistance.

Also accomplished at the meeting was the selection of a "Steering Committee", with Don Andrich as Chairman; George Econome, vice president; John Handy, treasurer; and Roger Zittel, secretary.

Other members of the association are: Jerry Jones, R.B. Welch, Tom Doherty, John Gisler, Don McGhee, Pete Pepito, Carolyn Toney, Norm Siefkin, Steve Toney, Joe Donahue, Ben Estacio and Gene Le Page.

The association's next meeting has been set for Thursday, Jan. 11 at 7:30 p.m.

1982: Lembi Community Park was the third City owned community park built in Folsom and was named after Dante P. Lembi of the Natomas Real Estate Company

1979

FOLSOM ATHLETIC ASSOC COMMUNITY YOUTH SPORTS LEAGUES

Servicing the youth and adult recreation and athletic needs in Folsom.



Today, the Folsom Athletic Association partners with 18 community youth sports leagues which are comprised of nearly 10,000 athletes on 731 teams. These programs utilize 1478 coaches and over 150 volunteers board members make these leagues possible.

Community Youth Sports Leagues partnering with the FAA Year Club was Established

1922 Folsom High Athletic Boosters
1961 Folsom National Little League
1965 Folsom Sea Otters
1970's Sierra Marlins Swim Team
1975 Folsom Lake Soccer League
1977 Folsom Softball Club
1979 Folsom Jr Bulldogs Youth Football & Cheer
1992 Folsom American Little League
1999 Folsom Youth Basketball Association

2006 Folsom Lacrosse Association
2007 Folsom Jr Eagles Youth Football & Cheer
2007 Vista del Lago Athletic Boosters
2008 Folsom Baseball Club
2008 Folsom Aspire Volleyball
2008 Folsom Elite AAU Basketball Academy
2011 Vista Talons AAU Basketball
2014 Folsom Wahoos Swim Team
2015 Folsom Fusion Girls AAU Basketball

FOLSOM PARKS

Today, the City of Folsom enjoys over 50 parks and facilities due to the community engagement and volunteers. The first three community parks were built by Folsom service clubs: Folsom Lions Club, Folsom Rotary Club, and the Folsom Athletic Association.

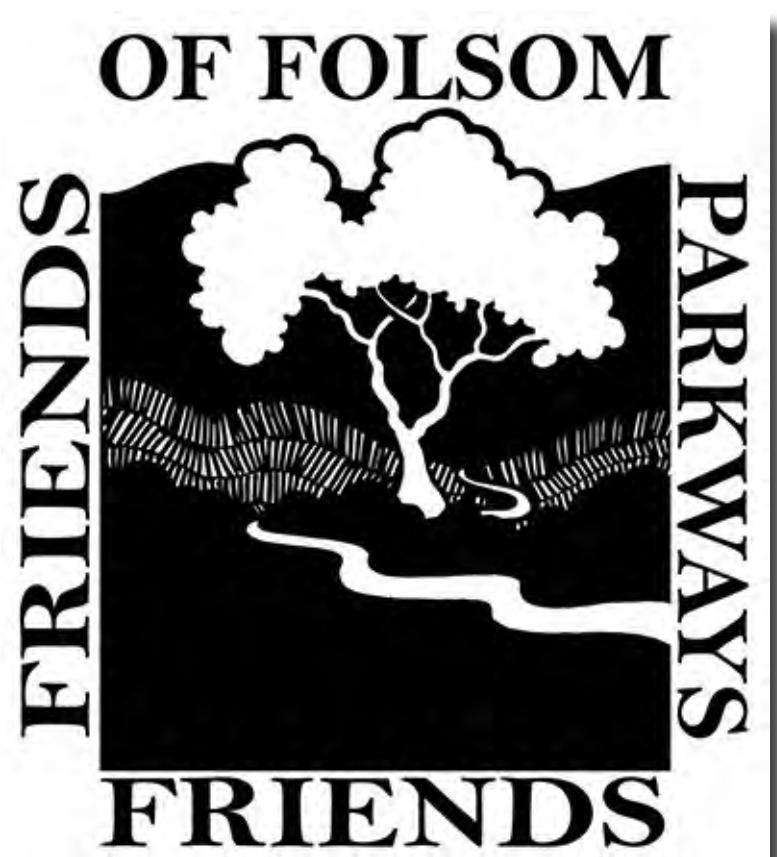
Folsom City Owned Community Parks and Facilities Year Opened

1947 Folsom City Lions Park/Zoo	1997 Hannaford Family Park
1960 Dan Russell Arena	1997 Reflections Mini Park
1967 Garden Club Mini Park	1979 Rotary Club
1968 Lew Howard Community Park	1998 Amos P Catlin Park
1981 Hinkle Creek Nature Area	1998 John Kemp Community Park
1982 Lembi Community Park	1998 Philip Cohn Park
1988 Steeplechase Mini Park	1998 Robert H. Miller III Rotary Clubhouse
1989 The Shores Mini Park	1999 Cobble Hills Ridge Park
1990 Digger & Sharon Williams Rodeo Park	1999 The Preserve Mini Park
1990 Ed Mitchell Park	1999 Wellfleet Mini Park
1991 Granite Mini Park	2000 Levy Park
1991 Folsom Community Center	2000 Willow Springs Park
1992 Egloff Family Park	2001 Aquatic Center
1993 BT Collins Park	2001 Elvie Perazzo Briggs Park
1994 Bud and Artie Davies Park	2001 Murer House
1994 Kentfield Mini Park	2002 Beacon Hill Park
1994 Young Wo Cemetary	2003 Bowen Park
1994 Windsor Mini Park	2003 Darling Park
1995 Bigfoot Mini Park	2003 Handy Family Park
1995 Deer/Rabbit Mini Park	2003 Hazel McFarland Park
1996 Cambridge Place Mini Park	2003 Willow Bend Park
1996 Chadwick Mini Park	2004 Cummings Family Park (Bike, Skate, Dog)
1996 Ernie Sheldon Youth Sports Complex	2004 Folsom Sports Complex
1996 Keller Mini Park	2006 Willow Hill Reservoir Community Park
1996 Livermore Community Park	2007 Folsom Public Library (Georgia Murray Building)
1996 Mann Family Park	2007 Senior and Art Center @ 48 Natoma
1996 Prewett Mini Park	2011 Nisenan Community Park
1996 Thorndike Mini Park	2016 The Island Ring Park
1996 Veterans Hall	2018 Econome Family Park
1997 Folsom Kids Play Park	

The City is committed to establishing and maintaining facilities, parks, and services that enhance the quality of life for all ages, cultural origins, and abilities.

1991

FRIENDS OF FOLSOM PARKWAYS FOLSOM BIKE TRAILS



Friends of Folsom Parkways

Serves as a steward of the parkways.

Assists in the parkway system and ways to improve them.

Works with 2,000+ volunteers planting trees, building bridges, removing invasive plants, and other beautification efforts.

City of Folsom Bike Trails
Class I Bike / Pedestrian
50 miles



Trails: Humbug Creek and Willow Creek (Humbug-Willow Creek Trail)
Folsom Rail Trail (along Folsom Boulevard)
Folsom Lake Trail (Johnny Cash Trail and the American River Trail)
Oak Parkway Trail (between Blue Ravine Road and E. Natoma Street)

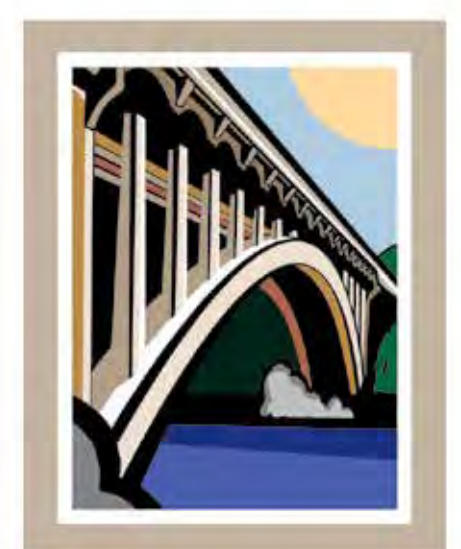
FOLSOM FACILITIES

Partnership between the City of Folsom, Folsom Cordova Unified School District, Folsom Athletic Association, Community Youth Sports Organizations.

Joint-use partnerships were established to:

- Develop and share facilities and costs.
- Enhance the value of facilities of adjacent schools and parks saving land cost.
- Design amenities that overlap schools and parks.
- Partnership involves 22 parks & 15 schools with a total of 354 joint use facilities.

<i>Facilities</i>	<i>City Parks</i>	<i>Schools</i>
Badminton Courts	0	18
Baseball / Softball Fields	25	24
Basketball Courts (outdoor full courts)	12	62
Batting Cages	4	0
Bicycle Park	1	0
Bocce Ball Courts	2	0
Cricket Fields	0	1
Cross-Country Course	1	0
Disc Golf Course	1	0
Football Fields	1	3
Gymnasiums / Multi's	3	15
Basketball (indoor full courts)	2	19
Volleyball (indoor)	3	21
Indoor Pitching / Batting Tunnel	1	0
Lacrosse Fields	4	0
Multi-Use Turf / Synthetic Fields	4	2
Pickleball Courts (indoor)	7	0
Pickleball Courts (outdoor)	4	0
Roller Hockey Rinks	2	0
Skate Park	1	0
Soccer Fields	27	30
Tennis Courts	16	19
Track	0	4
Volleyball Courts (outdoor)	11	0
Wrestling Rooms / Dance Rooms	0	4
Total	132	222



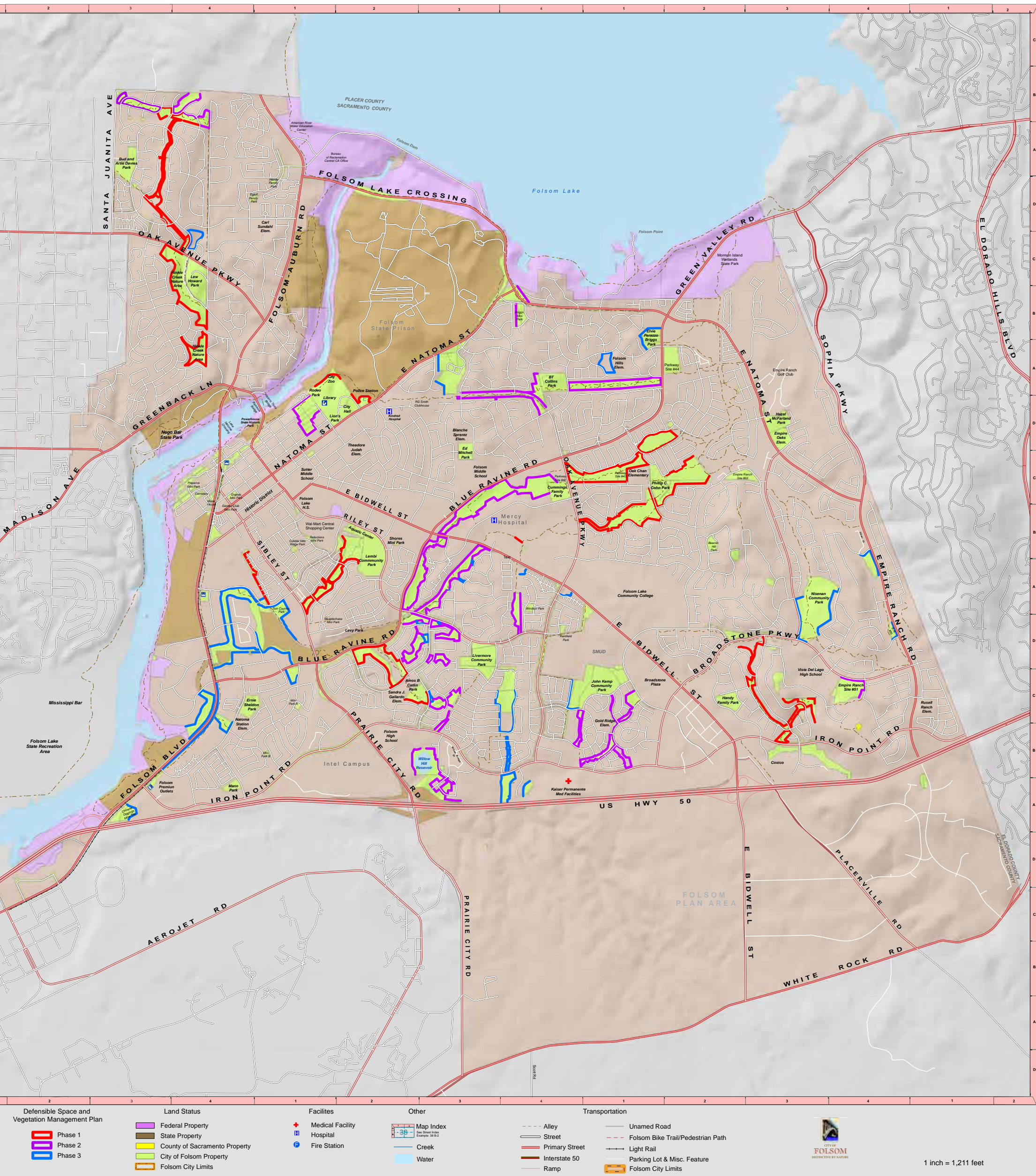
CITY OF
FOLSOM
PARKS & RECREATION
DEPARTMENT

FAA
Folsom Athletic Association
Recreation Opportunities For All

FOLSOM OPEN SPACE

Many of our Parks are bordered by or linked to open space. These valuable areas contain wetlands, vernal pools, and riparian habitat, all which acts as natural filters to keep our water clean or the native indian word for clear water “Natoma”.

City of Folsom Defensible Space and Vegetation Management Plan (Ladder Fuel)



The Natomas Company was not only instrumental in our park system but also gave over 1,000 acres to help start the American River Parkway that links Folsom to Sacramento.

These open space areas and parkways create corridors for our native animals to travel within.

The importance of this to the community is summed up by the city’s motto, “Distinctive By Nature”.



CITY OF
FOLSOM
DISTINCTIVE BY NATURE

And the logo that accompanies the motto prominently features our clear water of the American River that is and has always been the life blood of Folsom.



American River Parkway • 23 miles